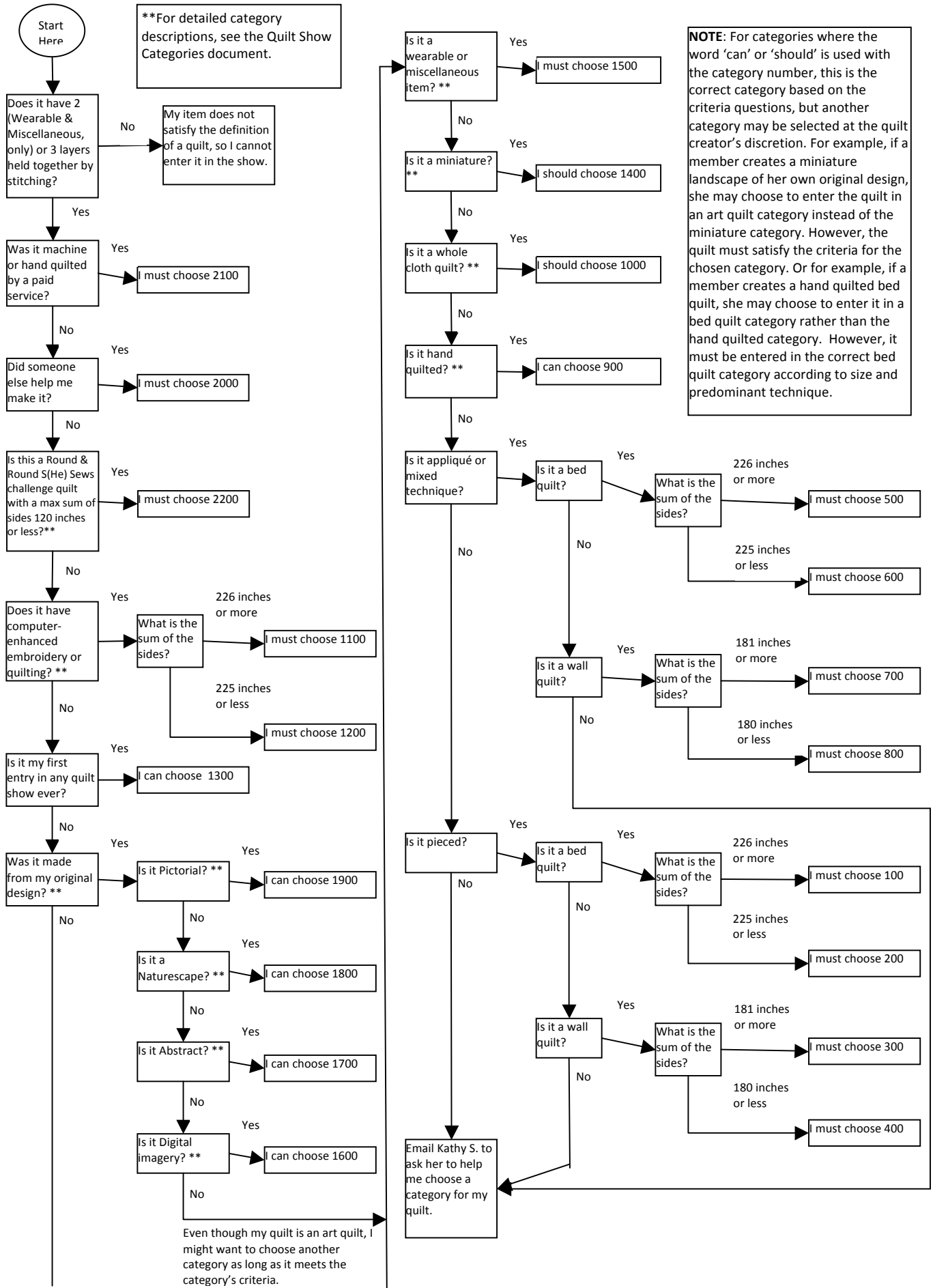


2017 Anderson Area Quilt Show - How do I choose a category for my quilt?



2017 Anderson Area Quilt Show Categories

Only ECQG & PFQG members may enter quilts in the quilt show. Entries **must have been completed after 01/01/14**, and they must not have been entered in a previous Anderson Area Quilt Show. Quilts must be completely finished. Partially finished pieces, pieces with pins and unsewn bindings will not be accepted.

The Quilt Registration Committee reserves the right to change the category of any entry.

All entries must be "Quilts" based on the definition of three layers held together by stitching. In the Wearables and Miscellaneous Category, two layers will be acceptable so long as they are quilted.

Number	Name	Description
--------	------	-------------

In these 4 categories, piecing predominates over other techniques in amount or effect. Piecing includes both traditional and non-traditional blocks and medallion quilts. As their names indicate, these quilts are intended for use either on a bed or as a wall hanging.

100	Large Bed Quilt - Pieced	The sum of all sides equals 226 inches or more.
200	Small Bed Quilt - Pieced	The sum of all sides equals 225 inches or less.
300	Large Wall Quilt - Pieced	The sum of all sides equals 181 inches or more.
400	Small Wall Quilt - Pieced	The sum of all sides equals 180 inches or less.

In these 4 categories, appliqué predominates over piecing, though the quilt may be a combination of both. This category also includes other techniques such as trapunto, hand embroidery, crazy quilting, fabric paint, and other forms of surface embellishment. Quilts in this category may be tied rather than quilted.

As their names indicate, these quilts are intended for use either on a bed or as a wall hanging.

500	Large Bed Quilt - Appliqué/Mixed	The sum of all sides equals 226 inches or more.
600	Small Bed Quilt - Appliqué/Mixed	The sum of all sides equals 225 inches or less.
700	Large Wall Quilt - Appliqué/Mixed	The sum of all sides equals 181 inches or more.
800	Small Wall Quilt - Appliqué/Mixed	The sum of all sides equals 180 inches or less.

These 7 categories are for quilts, which may be pieced, appliquéd, or of mixed techniques. However, they are more restrictive than the previous categories and are based on methods (Hand Quilted, Whole Cloth, Miniature, and Computer Enhanced), circumstances (First Quilt), or usage (Wearables and Miscellaneous), as the predominant focus.

900	Hand quilted Quilt	The quilt is machine or hand pieced and is hand quilted. Whole cloth quilts, which are hand quilted, may be entered in this category.
1000	Whole Cloth Quilt	The design is created by the quilt stitch using a single piece of fabric. No piecing is permitted, except to join widths of fabric on the front or the back.
1100	Computer Enhanced or Aided Quilt - Large	If any part of the quilt includes computer driven machine embroidery and/or computer driven automated machine quilting; the quilt must be entered in this category. The sum of all sides equals 226 inches or more.
1200	Computer Enhanced or Aided Quilt - Small	If any part of the quilt includes computer driven machine embroidery and/or computer driven automated machine quilting, the quilt must be entered in this category. The sum of all sides equals 225 inches or less.
1300	First Entry Quilt	This is the first time the quilter has ever entered any piece in any quilt show. Quilts may use any technique and may be any size. There is a limit of one entry per member.
1400	Miniature Quilt	Quilts with overall patterns reflecting reduced scale and miniaturization constructed with any technique including hand quilting and whole cloth design. If blocks are used, they should be no larger than 4 inches square. Quilts must measure 24 inches or less on each side.
1500	Wearables and Miscellaneous Items	Wearables may include clothing, handbags, scarves, hats, and jewelry. Miscellaneous items may include table linens, pillows, and other quilted accessories. These items may be constructed using any technique, a visible portion of which includes quilting. On these items, two layers (rather than three) held together with stitching are acceptable. These items are often three-dimensional in nature; that is, they don't lay flat on a bed or hang flat on a wall.

These 4 categories are for Art Quilts, which must be the quilt maker's original, design reflecting innovative construction and design techniques, theme or subject matter, and materials. Fabric should be the primary medium, and the quilt must have three layers held together with stitches. No commercial patterns or copies of previous works may be used. In these 4 categories, quilts may be any size.

1600	Digital Imagery	Quilts designed with images that are digitally created and/or altered using inkjet printing, silk screening, photo transfer, lithography, or other methods.
1700	Abstract	Quilts designed with color, line, and design in original or cutting-edge forms, shapes, and compositions. These quilts are non-literal.
1800	Naturescapes	Quilts designed to illustrate aspects of natural scenery, including land, sea, forests, mountains, deserts, gardens, and flowers in natural surroundings. Creatures and wildlife may be a component, but they should not be the focus of the quilt. Cityscapes may be included in this category.
1900	Pictorial	Quilts designed to illustrate a recognizable image such as people, objects, still life, plants, animals, and wildlife.

All of the above entries (Categories 100 - 1900) must be made entirely by the submitting ECQG & PFQG member.

2000	Group Quilt	Two or more persons were involved in the completion of the quilt. Includes all techniques, as well as quilting by a person other than the maker of the top, but the quilting may not be done by a paid service.
2100	Quilted by a Paid Service	Any quilt made by two or more persons, one of whom is paid for his or her hand or machine quilting service.

Challenge entries must be made entirely by the submitting ECQG & PFQG member.

2200	Quilt Show Challenge	See the Round and Round and Round (S)He Sews Challenge "Rules" for a complete description. Sum of all sides equals 120 inches or less.
------	----------------------	--

Anderson Area Quilt Show Entry Registration Form

“Celebration of Quilts” Electric City Quilt Guild & Prickly Fingers Quilt Guild

August 17-18, 2017 Anderson Civic Center, Anderson, SC

Name: _____ Telephone: _____

Title of Entry _____

Size in Inches: Width (at Widest Part) _____ Length (at longest part) _____

Quilt Show Category: _____

Description (**25 or less**): _____

Pieced/Appliquéd by: _____ Quilted by: _____

.....

1. A registration form must be completed for EACH ENTRY and returned to Kathy Sowder no later than JUNE 14, 2017, she will be at the Anderson County Library from 9:30 am to 11:30 am.

2. A 4x6 color photo of the entry must be stapled to the back of this registration form.

3. Entries must be delivered to the Civic Center on Wednesday, August 15 between 9:30 am and 12:00 noon.

4. Fill out both labels at bottom of this form. Cut out the **LEFT side only** and baste it on the BACK lower right side of your entry item. The right side will be given to you at the CHECK-IN. The Check Out Receipt **MUST** be used to reclaim your entry after the show.

5. Please staple your quilt photo to the back of this form.

While precautions will be taken to protect your entry, neither the Electric City Quilters Guild, the Prickly Fingers Quilters Guild, The Anderson Recreation Complex (Civic Center), the Quilt Show Committee, Anderson County, nor the city of Anderson will be held liable for any loss or damage to your entry. So please check with your insurance carrier to verify that your entry is adequately insured.

I understand and accept the terms and conditions of entry.

Signature: _____ Date: _____

QUILT LABEL (cut out and baste to entry back)

CHECK OUT RECEIPT (leave on form)

Name _____

Name _____

Entry Title _____

Entry Title _____

ITEM NUMBER

ITEM NUMBER